

MONTHLY MEMBERSHIP PROGRESS REPORT

District 9 NE

Results as of: 5/31/2024

GMT:

LOCATION IOWA

GMT CA

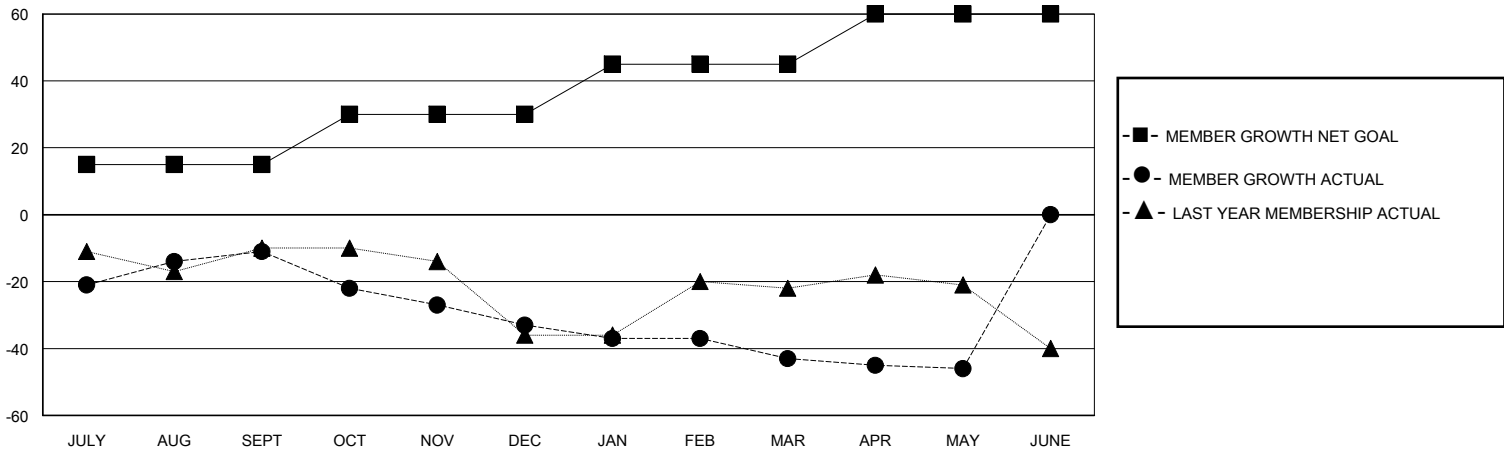
Clubs			
RESULTS FOR 2023-2024			
QUARTER	NEW CLUB GOAL	NEW CLUBS	DROPPED CLUBS
JULY/AUG/SEPT	0	0	0
OCT/NOV/DEC	0	0	0
JAN/FEB/MAR	0	0	0
APR/MAY/JUNE	1	0	0

Members			
RESULTS FOR 2023-2024			
QUARTER	MEMBER GROWTH NET GOAL	MEMBER GROWTH ACTUAL	DROPPED MEMBERS ACTUAL (including transfers)
JULY/AUG/SEPT	15	27	37
OCT/NOV/DEC	15	16	37
JAN/FEB/MAR	15	7	17
APR/MAY/JUNE	15	11	14

GOALS AND ACTUAL NEW CLUBS CUMULATIVE



GOALS AND ACTUAL MEMBERS CUMULATIVE



DROPPED CLUBS: 0	23 CLUBS OF 41 ADDED 1 OR MORE NEW MEMBERS	GENDER DISTRIBUTION MALE 831 (75.68%) FEMALE 267 (24.32%)
DROPPED MEMBERS DECEASED 17 CLUB CANCELLED 0 OTHER 88 TOTAL 105	CLICK HERE FOR CUMULATIVE MEMBERSHIP DATA	TOTAL FAMILY UNIT MEMBERS 164 FAMILY MEMBERS PAYING HALF DUES 82